

Thermogard HQ™

Surface Setup Guide



ZOLL

ZOLL Circulation, Inc.
2000 Ringwood Ave
San Jose, CA 95131 USA
+1-877-225-7487
www.zoll.com

1. Initiate Console

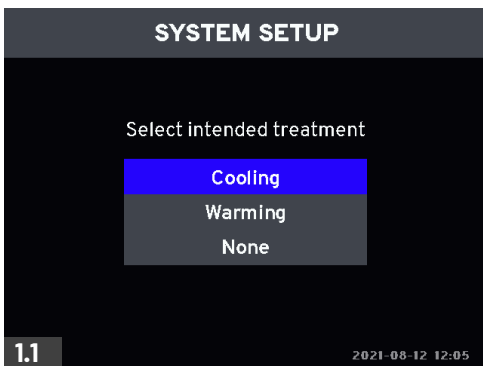
1.0 POWER ON THE CONSOLE

Plug in the console and turn on the power switch located on the lower rear of the unit. (figure 1.0)
The console will take several minutes to complete self-tests.



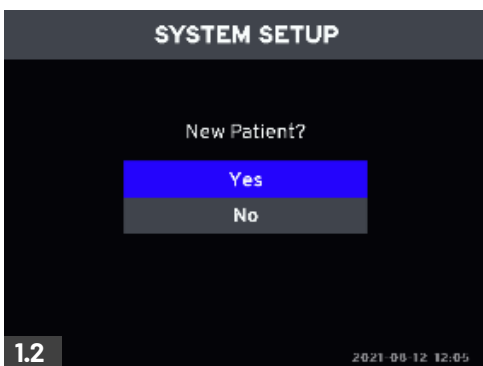
1.1 SELECT "COOLING"

(figure 1.1)



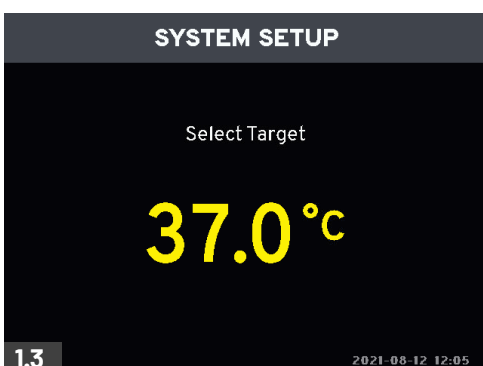
1.2 CHOOSE WHETHER NEW PATIENT

Choose No if continuing a prior treatment. (figure 1.2)



1.3 SELECT TARGET TEMPERATURE

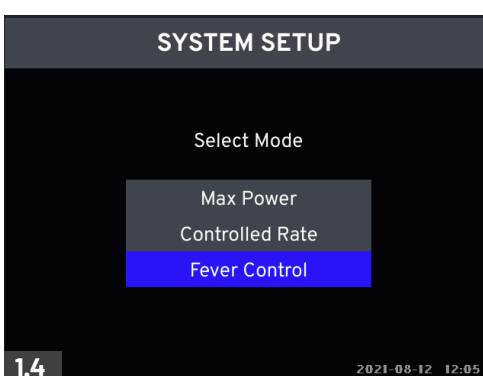
(figure 1.3)



1.4 SELECT "FEVER CONTROL" MODE

(figure 1.4)

Caution: Always use "Fever Control" mode when using surface treatment with Thermogard.



2. Set Up Tubing

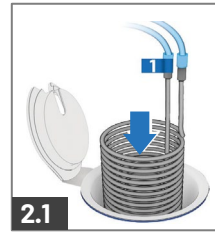
2.0 FILL RESERVOIR BAG

- Fill reservoir bag with water and fasten cap.
- Hang reservoir bag on console hook. (figure 2.0)



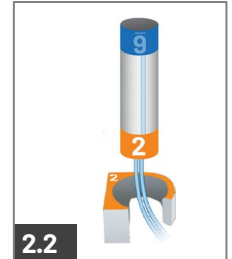
2.1 INSERT COIL

- Open coolant well cap.
- Place coil in well. (figure 2.1)
- Close cap, passing tubes through slit in cap.



2.2 PLACE AIR TRAP

- Place in stand with orange end down. (figure 2.2)



2.3 LOAD PUMP TUBE

- Open roller pump lid.
- Fully insert tubing disc into slot 3.
- Firmly rotate counter-clockwise while feeding tube into the raceway.
- Fully seat tube into groove 3. (figure 2.3)



2.4 CONNECT SURFACE PAD

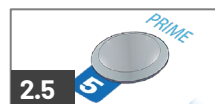
- Fully connect both fluid connectors to the surface pad. (figure 2.4)



Caution: The tubing must be fully connected to the surface pad (inlet and outlet) before it can be primed.

2.5 PRIME TUBING

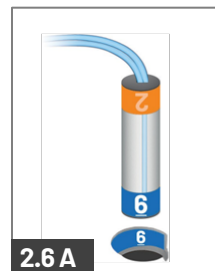
- Close roller pump lid.
- Press and release PRIME button. (figure 2.5)
- Pump will run for 2 min. Confirm that the air trap is full of water.



Caution: If the air trap is not full after 2 min, recheck steps 2.0 – 2.5.

2.6 INSERT AIR TRAP

- Insert the air trap into the chamber with blue end down. (figure 2.6 A)
- Close console top cover while ensuring tubing is not pinched.

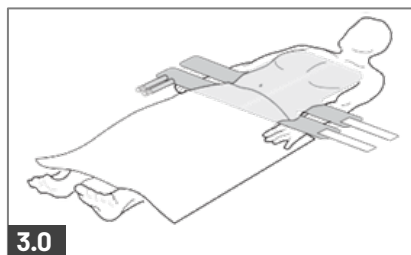


3. Place Surface Pad

3.0 PLACE SURFACE PAD UNDER PATIENT

Place the surface pad under the patient. Do not secure the Velcro straps at this time. (figure 3.0)

Note: The surface pad may be disconnected from the tubing while positioning it under the patient.



3.1 CHECK SURFACE PAD CONNECTIONS

Ensure the surface pad is fully connected to the tubing. Both fluid connectors should click when fully engaged. (figure 3.1)



3.2 CONNECT PROBE

Connect a core temperature probe to the front of the console. (figure 3.2)



4. Start Treatment

4.0 PRESS ►||

Press the ►|| button on the console to start treatment. (figure 4.0)

Caution: Ensure the surface pad is open and the Velcro straps are not secured. (figure 3.0)



4.1 SET LO ALARM

Press the ≡◀ button on the console, then set the patient Lo alarm to 1C° below the target temperature. (figure 4.1)

Warning: In Fever mode, the console will not warm the patient. Setting the Lo patient temperature alarm ensures that an alarm occurs if the patient's temperature drops.

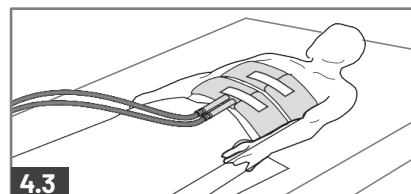


4.2 WAIT FOR SURFACE PAD TO FILL

Wait for the surface pad to fill with water. This typically takes 3-5 minutes. A small amount of air in the surface pad is acceptable and will dissolve over time.

4.3 SECURE SURFACE PAD TO PATIENT

Secure and adjust the surface pad to fit the patient using the enclosed stretchable Velcro straps. The surface pad should be snug but not constraining. (figure 4.3)



4.4 CONFIRM FLUID FLOW

Confirm that fluid is flowing through the tubing and surface pad by observing the rotation of the inline flow indicator (pinwheel). This may take several minutes. Check for kinks and tap on the flow indicator as needed. (figure 4.4)

